



greaterwichtapartnership.org

2023

for a growing Wichita region

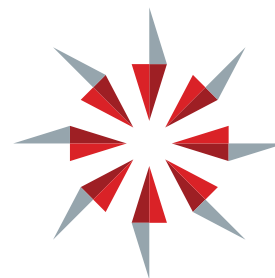


Greater Wichita
Partnership



DOWNTOWN
WICHITA

Opportunity Wichita



Greater Wichita
Partnership

—
ANNUAL
REPORT



Partnership Investors

Thanks to your aspirational leadership and continued investment in 2023, the Wichita region witnessed transformational progress and remarkable achievements.

Our region's investment in economic development, workforce initiatives and marketing efforts have helped create hundreds of new jobs across various industries, resulting in more than \$418 million in capital investment and another \$5.3 billion in the prospect pipeline. While aviation remains a cornerstone of our economy, we have seen significant growth in emerging sectors such as healthcare and technology. In healthcare alone, substantial investments will begin in early 2024 in downtown Wichita to deepen our healthcare workforce and innovation.

Many of these initiatives are driven by the Partnership's 2035 vision to strategically grow our region's global capacity. This involves investing in pioneering economic development strategies, catalytic planning in downtown development and livability and leveraging our critical assets to support a dynamic and prosperous community.

We need your continued active leadership, engagement and investment to forge forward and establish Wichita as the city the next generation will enthusiastically call home. We ALL build Wichita.

Sincerely,

Charlie Chandler
Co-Chair of the Partnership
INTRUST Bank, Chairman and CEO

Aaron Bastian
Co-Chair of the Partnership
Fidelity Bank, President and CEO

GROWTH CATALYST

Leveraging Economic Development

New Companies to the Region



Quickstep: Australia's largest independent aerospace composite manufacturer selected the **Wichita region** as its preferred U.S. location, the first location outside of Australia.



Charlotte Pipe & Foundry: The nation's top manufacturer of cast iron and plastic pipe fittings announced it will construct an \$80 million manufacturing facility in **Maize**, generating 50 new job opportunities.



GAF: The City of **Newton** approved a \$350 million development agreement with North America's largest roofing manufacturer, making it the largest private-sector investment in the region in the last several years.

KPIs *2015 - current*

13,391



Total Jobs

\$3.4B



Capital Investment

\$650M



Total Annual Payroll

New Construction: 829,200 SQ. FT.
Absorption: 94,000 SQ. FT.

2023



U.S. Senator Jerry Moran at the Paris Airshow

Emerging Industries

We see unique opportunities to align our assets and talent to drive growth in these pivotal areas.



Defense



Space



eVTOL



MRO



**Growth of Air Capital
of the World Reception**

Attracting an audience of nearly 450 aerospace leaders, cabinet-level dignitaries and VIP guests, the reception has grown to be one of the largest and most coveted events at the International Air Show.

2015-CURRENT

185X
35X

For every dollar invested in the Partnership, we've driven \$185 in capital expenditures to the region.

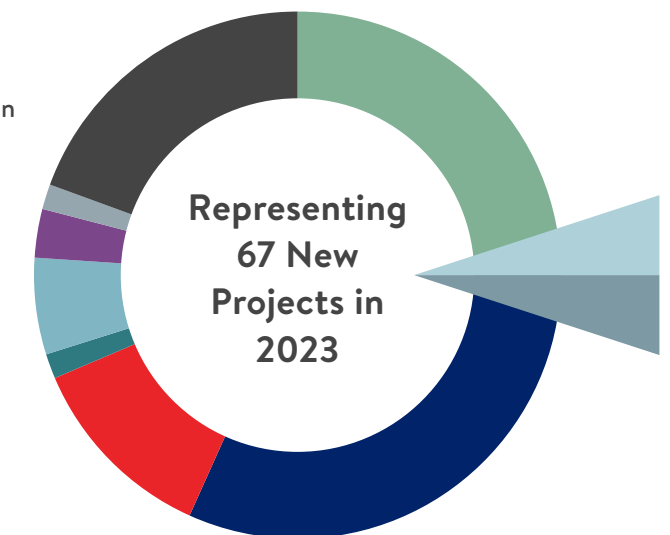
For every dollar invested in the Partnership, we've helped drive \$35 in annual payroll for the region.

ROI

Prospects by Industry

It is critical we persist in the strategic diversification of our economy. Our key priorities represent economic growth across numerous industries.

- Advanced Manufacturing: 17
- Aerospace: 21
- Agriculture/Food: 8
- Data Service: 1
- Energy: 4
- Logistics: 2
- Healthcare: 1
- Other: 13



TALENT EMPOWERED

Developing our Talent Workforce

Three talent workshops were designed to bring together industry and education leaders to activate feedback loops and accelerate workforce development. Below are the attendance numbers for each workshop.

297



Technology

106



Manufacturing

78



Healthcare

“The Healthcare workshop created a way for us to connect with the right people at the right time. Without the Workshop, I don't think (we) would be moving forward. The work is important and sometimes tedious, but it is important as we build a better Wichita together.

Thanks for all you do and continue to do for our great city.”

Kelly Bielefeld, Superintendent of Wichita Public Schools

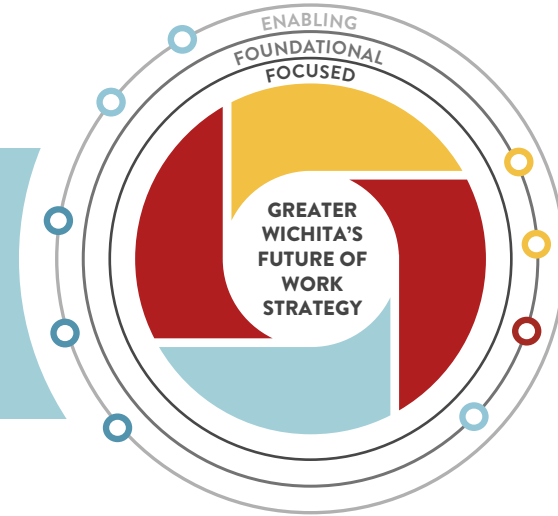


Successful Connections

Over **1,200** Choose Wichita promotional items have been handed out, including straws, shirts, gifts, and printed materials.

15,955 website visitors to Choose Wichita. (61% increase from previous year.)

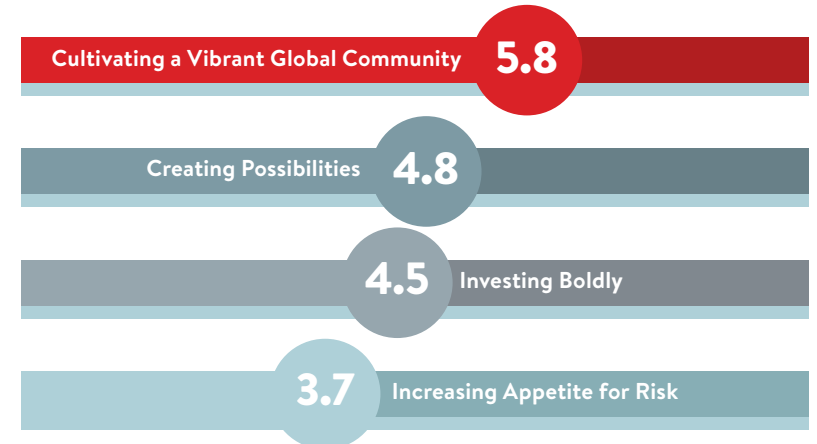
195,515 organic impressions on social media channels. (226% increase from previous year.)



Talent Roadmap Leadership Coalition (TRLIC)

Creating a Baseline

TRLIC assessed the foundational progress toward the Partnership's 13 talent priorities. The ratings are graded on a scale of 1-10 where 1 signifies no progress and 10 denotes the completion of the commitment.



Launch of Talent Ambassador Program:

Designed as a third-party concierge service, the ambassador facilitates the recruitment of senior-level professionals to the Wichita region by curating personalized and distinctive experiences.

“The (Talent Ambassador) was incredible. Prior to coming to town, our candidate and his wife had a very different idea of what Wichita was, and she really made it shine. They particularly liked going to the “IYKYK” types of places, like the Workroom, etc. The ambassador was able to give perspective as she is not a “Wichita native” and the challenges/benefits she faced when she moved. This was genuine...we cannot thank you enough for making this a priority.”

ALLTITE, INC.

THE HEART OF OUR CITY

Downtown Wichita



Project Downtown Plan Area

→ Amount Invested in the Core Since 2010

\$1.6B+

→ Project Investment in the Pipeline

\$760M

New since 2010



1,658

Residential:
New Units Added



450,000

Office:
Square Feet



470

Hotel Rooms

Forecast:

Residential:

Can absorb 4,046-5,369 total over the next 5-7 years.

Office:

515,000- 601,000 square feet over the next 7-10 years.

Hotel:

235 keys over the next 7-10 years.



PROJECT DOWNTOWN 2035

Building upon the transformational success of Project Downtown, Project Downtown 2035 is a 10-year vision plan to drive catalytic investment in Wichita's core. A vibrant, destination downtown is critical to the region's overall economic growth and is necessary to retaining and attracting a talented workforce. Through specific action-oriented strategies and research, the plan will cultivate an environment for continued public and private sector investment, build upon the existing assets to leverage infill development opportunities, further the connection of downtown assets, and assist in the identification and realization of current and future growth possibilities. This initiative is launching in 2024.

2023 BOARD OFFICERS

Joel Kelley, **Chair**, Cablecom Inc.
Natalie Gosch, **Vice Chair**, Cargill Protein
Mark Schmelzle, **Finance Chair**, AGH
Alan Banta, **Immediate Past Chair**, Trans Pacific

Board Members

Alex Breitenbach, JE Dunn Construction
Sam Chandler, INTRUST Bank
Cindy Claycomb, Downtown Resident
Randy Doerksen, Meritrust Credit Union
Sharon Fearey, Downtown Resident
Jessie Hartke, WAVE Event Venue
Andrea Hattan, The Hive
Arlen Hamilton, Adams Brown CPAs
Tracy Hoover, Groover Labs
Nicole Howerton, Howerton+White
Jeremy Hurt, Murfin Inc.

Ex-Officio Members

Troy Anderson, City of Wichita
Maggie Ballard, Wichita City Council
Ryan Baty, Sedgwick County Commission
Debra Fraser, Old Town Association
Bryan Frye, Wichita City Council
Brandon Johnson, Wichita City Council
Pete Najera, United Way of the Plains
Shelly Prichard, Wichita Foundation
John Rolfe, Wichita Regional Chamber of Commerce
Susie Santo, Visit Wichita
Scott Wadle, MAPD

Joe Johnson, Schaefer Architecture
Tom Johnson, NAI Martens
Dr. Tiffany Masson, KHSC-KansasCOM
Chad McDaniel, Emprise Bank
Tim Nelson, Fidelity Bank
Chrissy Robben, Hexcode Designs
Luis Rodriguez, Method Productions
Tara Shaffer, High Touch Technology
Don Sherman, Evergy
Stan Smith, Martin Pringle Attorneys at Law
Joe Surmeier, Professional Engineering Consultants, P.A.
Joe Tigert, RT Financial

STRATEGIC PLANNING

Wichita is a globally competitive economy that understands the importance of making continued investment in growing our region's economic capacity, talent-rich environment and quality of place.

To support this, the Partnership team worked with Baton Global to build an innovative strategic plan to drive our region's growth to 2035. This process clarified the key initiatives and focus areas the team will prioritize as well as the financial sustainability needed to grow our region's global capacity.

→ Key Initiatives for Each Focus Area

- 
Economic Development
 - ▶ Attract new businesses from outside the region.
 - ▶ Expand and diversify core industries.
 - ▶ Retain and expand regional businesses.
 - ▶ Enhance the region's economic environment.
- 
Talent
 - ▶ Retain and attract key talent.
 - ▶ Develop talent pipeline through training and education.
 - ▶ Remove barriers for underserved talent pipelines.
 - ▶ Prepare industry and educators for future workforce needs.
- 
Quality of Place
 - ▶ Develop a thriving, vibrant downtown.
 - ▶ Enhance amenities and transformative community gathering places.
 - ▶ Develop a downtown with artistic and cultural experiences.



Foundational assets for growth

THE ENGAGEMENT PROCESS



Regional Vision: A Thriving Global City

- ▶ Wichita is an economically vibrant, talent-rich community with a high quality of life.
- ▶ The region is globally competitive economically and has globally competitive talent.
- ▶ MSA is defined as 10 counties commonly referred to as Greater Wichita.

Partnership's Vision: Driving Growth for Wichita 2035

- ▶ Proactively engaged in strategies that move regional initiatives forward.
- ▶ Increased GDP, attraction and development of skilled talent to support the regional economy, and improved quality of place for the region.
- ▶ Strategic priorities identified are fully implemented by 2035.

Organizational Strategy

↳ $p = mv$

Momentum=Mass x Velocity. There is momentum in the region now. We can't slow down, lest we lose it and the opportunities ahead.
#WeAllBuildWichita



Opportunity Wichita

INVESTMENT MATTERS

These leaders, businesses and organizations are investing to make an impact.
Together, we ALL build Wichita.

Executive Member



Adviser



Leadership Council

- 6 Meridian
- Aero-Tech Engineering, Inc.
- Alloy Architecture
- Alltite
- Bell
- Beran Concrete
- Berry Companies, Inc.
- BHC
- Butler Community College
- Capitol Federal Savings Bank
- The Carnahan Group
- Commerce Bank
- Conco Construction
- Cornejo & Sons Inc.
- Cox Communications
- Crossland Construction
- Delta Dental of Kansas, Inc.
- Dondlinger Construction
- Eby Construction Co.
- El Dorado, Inc.
- Envision, Inc.
- Equity Bank
- Farha Roofing
- FORVIS
- Galloway & Company
- Gardner Design
- Goodwill Industries of Kansas
- Hall's Culligan Water
- Harlow Aerostructures LLC
- Harvey County Economic Development
- Heartspring
- House of Schwan, Inc.
- Howerton+White
- Hutchinson/Reno County Chamber of Commerce
- IBEW L.U. 271 - Electrical Workers
- IMA, Inc.
- JE Dunn Construction
- Kansas Gas Service
- Kansas Health Foundation
- Key Construction, Inc.
- Keystone Solid Surfaces
- KHSC-KansasCOM
- LANGE
- Mariner Wealth Advisers
- Martin Pringle Attorneys at Law
- Metal Finishing Company
- Newman University
- Novacoast
- Pearson Construction
- Plumbers & Pipefitters Local 441
- Professional Engineering Consultants, P.A.
- Realtors of South Central Kansas
- Ruffin Companies
- SPT Architecture
- Star Lumber & Supply Co. Inc.
- Stryv Bank
- TNW - Turner Nichols Williams Group
- UCI
- UMB Bank, N.A.
- United Way of the Plains
- Vantage Point Properties
- Visit Wichita
- Wesley Medical Center
- Wichita Foundation
- Wichita Riverfront, LP
- Wichita State University
- Workforce Alliance of South Central Kansas, Inc.
- WSU Tech
- Yingling Aviation

Member

- Amazon
- Anderson Management Company
- Automation-Plus, Inc.
- Black Hills Energy
- Docking Financial Group
- Golden Plains Credit Union
- Gravity::Works Architecture
- Great Plains Ventures Inc.
- Hinkle Law Firm, LLC
- InfoSync Services
- Lee Air Inc.
- Legacy Bank
- Mid American Credit Union
- NAI Martens
- Rand Graphics Inc.
- Regier Carr & Monroe, L.L.P.
- Results Driven Marketing
- Schaefer Architecture
- Security 1st Title LLC
- Sharpline Converting Inc.
- Skyward Credit Union
- TranSystems Corporation
- WAM Real Estate

INCREASED INVESTMENT

Executive Member Level



Adviser Level



Member Level

- Legacy Bank
- NAI Martens
- Sharpline Converting Inc.

NEW INVESTORS

Adviser Level



Leadership Council Level

- Aero-Tech Engineering, Inc.
- Farha Roofing
- Galloway & Company
- Heartspring
- Keystone Solid Surfaces
- Mariner Wealth Advisers
- Metal Finishing Company
- Pearson Construction
- Stryv Bank

2023 GREATER WICHITA PARTNERSHIP EXECUTIVE BOARD

Executive Board Officers

Co-Chair – Charlie Chandler, INTRUST Bank

Co-Chair – Aaron Bastian, Fidelity Bank

Vice-Chair – Jon Rolph, Thrive Restaurant Group

Treasurer – Matt Michaelis, Emprise Bank

Secretary – Derrick Nielsen, High Touch Technologies

President – Jeff Fluhr, Greater Wichita Partnership

Ex-Officio

Matt All, Blue Cross Blue Shield of Kansas

Paul Allen, AGH

Chuck Cadena, Spirit AeroSystems

Chuck Caisley, Evergy

Ramin Cherifat, McCownGordon

Marty Cornejo, Cornejo Holdings

Ron Draper, Textron Aviation

Joy Eakins, Cornerstone Data, Inc.

Stephanie Harder, Textron Aviation

Ben Hutton, Hutton

Joel Kelley, Cablecom, Inc.

Pete Meitzner, Sedgwick County Commissioner

Dr. Rick Muma, Wichita State University

James Nastars, Meritrust Credit Union

Mark Nichols, Koch Industries

Gary Oborny, Occidental Management/Pinnacle Aerospace

Mark Quayle, Cargill Protein

John Rolfe, Wichita Regional Chamber of Commerce

Gary Schmitt, INTRUST Bank

Todd Slawson, Slawson Companies

Tonya Sudduth, Bombardier

Dr. Sheree Utash, WSU Tech

Dr. Brandon Whipple, City of Wichita Mayor

At-Large Directors

Pete Najera, United Way of the Plains

Ed O'Malley, Kansas Health Foundation

Shelly Prichard, Wichita Foundation

Emeritus Director

Scott Schwindaman

