



## TOGETHER, WE GROW

The Greater Wichita Partnership is shaping the future of South Central Kansas through deliberate strategies for intended outcomes. Our investors are critical to achieving economic growth. While significant progress has been made, we believe this is just the beginning. Our ability to grow depends on an evolutionary-based mindset with the foresight to tackle the challenges and opportunities of tomorrow, in addition to today.

### Promoting Progress

Today's economic development is interrelated. In order to keep and grow jobs, you need people and in order to have people, you have to have a great quality of place. Since the Greater Wichita Partnership's formation in 2015, we've successfully moved our region forward. Below are a few key highlights:

- Addressed and fast-forwarded economic development projects.
- **Attracted and secured jobs** that could have gone to other states.
- Cultivated a spirit of collaboration and teamwork within the region.
- Initiated an aggressive approach to **talent marketing**.
- Accelerated development in **Downtown Wichita**.
- Launched two major **community planning and visioning efforts**.

---

"We must proactively drive change, push conversations about what our region needs, and think and act differently, to create the future we want for the next generation."

Charlie Chandler and Aaron Bastian, Co-chairs of the Greater Wichita Partnership

---

The Greater Wichita Partnership is focused on how to strategically create the most impact. We believe framing the focus of our work on three main priorities is the most effective way to fast-forward the region's growth — **jobs, talent, and quality of place**.



# Greater Wichita Partnership PRINTED WEBSITE REPORT

## Growing Jobs

**13,800**

JOBS ANNOUNCED  
2015-YTD

**\$3.4B**

CAPITAL INVESTMENT  
2015-YTD

**\$673M**

TOTAL ANNUAL PAYROLL  
2015-YTD



## Learn More Attracting Talent

**45K+**

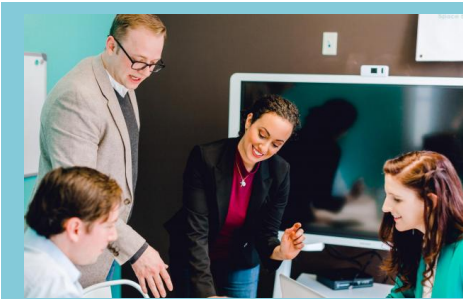
CHOOSE WICHITA WEBSITE  
SESSIONS  
SINCE LAUNCH

**19**

RESOURCES FOR  
EMPLOYERS TO SELL THE  
REGION

**500+**

HR AND TALENT  
PROFESSIONALS ENGAGED  
THROUGH  
PRESENTATIONS  
SINCE LAUNCH



# Greater Wichita Partnership PRINTED WEBSITE REPORT

[Learn More](#)

## Enhancing Quality of Place In Downtown Wichita

**1,658**

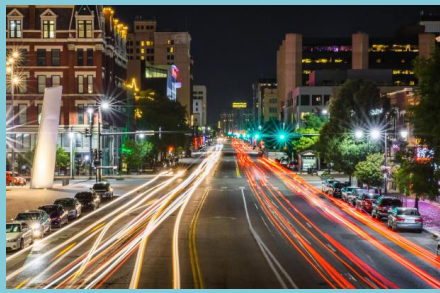
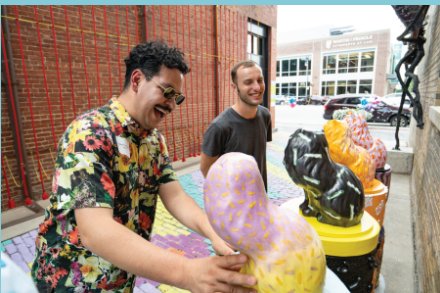
NEW RESIDENTIAL UNITS  
IN DOWNTOWN WICHITA  
2010-YTD

**\$1.6B**

INVESTMENT IN PROJECT  
DOWNTOWN AREA  
2010-YTD

**375**

HOTEL ROOMS ADDED  
2010-YTD



[Learn More](#)

## Enhancing Quality of Place in our Distinctive Region

**3**

MAJOR COMMUNITY  
PLANS UNDERWAY:  
DOWNTOWN WICHITA  
ACTION PLAN, PROJECT  
WICHITA, RIVERFRONT  
LEGACY MASTER PLAN

**19K+**

COMMUNITY  
ENGAGEMENT  
TOUCHPOINTS

**\$1.3M**

RAISED TO COMPLETE  
PLANNING EFFORTS



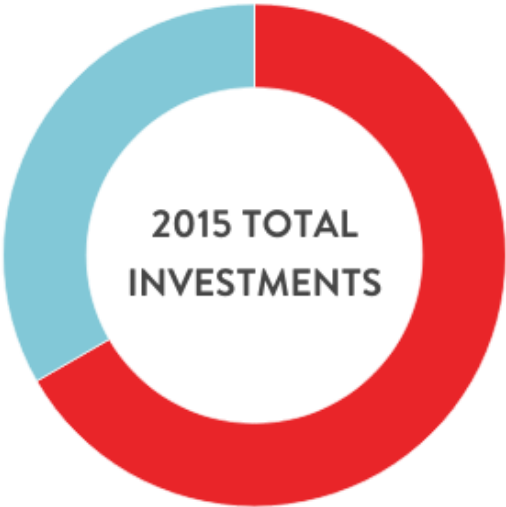
[Learn More](#)

---

Your investment has a direct and positive impact toward cultivating a rich and innovative environment to grow our local economy.

Charlie Chandler and Aaron Bastian, Co-chairs of the Greater Wichita Partnership

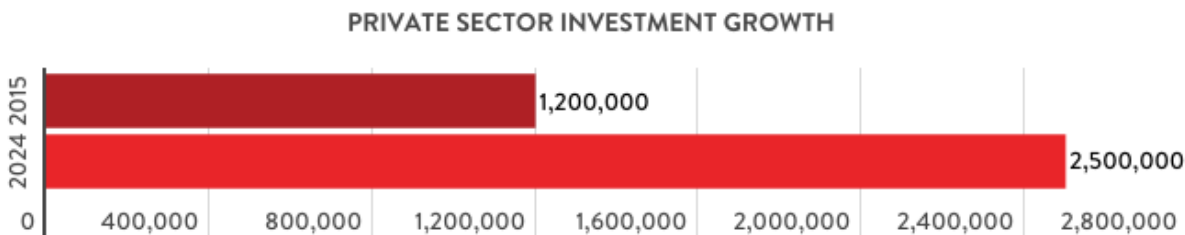
---



- 2015 Private Investment Total: \$1.2 Million
- 2015 Public Investment Total: \$600,000
  - \$300,000 from City of Wichita
  - \$300,000 from Sedgwick County



- 2024 Private Investment Total: \$2,500,000
- 2024 Public Investment Total: \$800,000
  - \$400,000 from City of Wichita
  - \$400,000 from Sedgwick County



The Greater Wichita Partnership is successfully leveraging investments and growing our investor base to continue advancing



# Greater Wichita Partnership PRINTED WEBSITE REPORT

the economic development of our region. We invite you to become an investor and fast-forward our region's present vitality and future growth. Learn more about the Greater Wichita Partnership and the difference your investment can make.



Vice President of Investor Relations  
**BECCA NEWMAN**

(316) 500.6650  
becca@greaterwichitapartnership.org

[Contact Us](#)