



## HIGH QUALITY CARE FOR A GROWING REGION

### Healthcare

The greater Wichita region’s healthcare sector encompasses a wide range of businesses, practices, and highly specialized medical manufacturers. With a population of nearly 800,000 people in the 10-county region, a high-quality healthcare system supports the needs of a growing population. The region is home to national healthcare systems **HCA** and **Ascension Health**, offering the largest hospitals and clinics in the state, along with a significant network of support systems and resources.



**27K+**

SKILLED HEALTHCARE WORKERS

**TOP 10**

FOR GRADUATING FAMILY PRACTICE PHYSICIANS

**18**

ACUTE CARE AND HOSPITAL FACILITIES

[See the full list of data points, rankings, and sources](#)

# Greater Wichita Partnership

## PRINTED WEBSITE REPORT



## The Healthcare Ecosystem

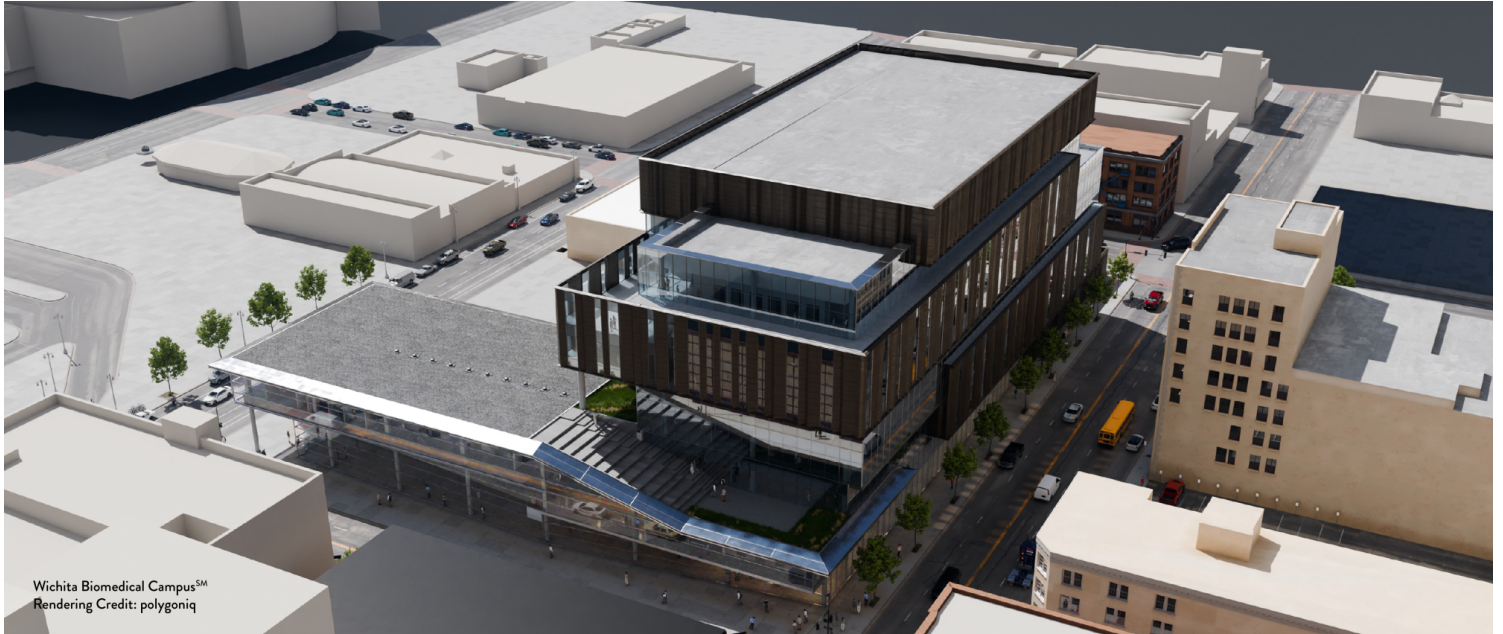
The greater Wichita region is home to 18 acute care facilities and hundreds of specialty medical practices. Healthcare is the second-largest sector of regional employment, annually employing over 27,000 highly skilled medical professionals.

The regional healthcare system is largely supported by graduates from nationally ranked nursing programs in the area. Eight colleges and universities serve the region, including the [University of Kansas School of Medicine in Wichita](#), which ranks among the top 10 schools in the nation for graduating family practice physicians, a much-needed role in modern medical practice.

## A Growing Biomedical Corridor

Downtown Wichita is seeing a surge of investment as the \$300 million [Wichita Biomedical Campus<sup>SM</sup>](#) prepares to open in 2027, anchoring what's quickly becoming a dynamic biomedical corridor. The area already includes the [Kansas College of Osteopathic Medicine](#) and [Ascension Via Christi](#). A nearly \$20 million COMCARE Community Crisis Center is under construction adjacent to the campus and is designed to expand access to mental health services when it opens in 2027. Additional investments, including Heartspring's acquisition and planned expansion of pediatric outpatient services downtown, signal a growing ecosystem of education, health care, and community impact.

# Greater Wichita Partnership PRINTED WEBSITE REPORT



## Bioscience Manufacturing

Bioscience manufacturing is a natural extension of expertise and engineering knowledge in the area. Both [Pfizer](#) and the Dutch company [Fagron Sterile Services](#) recognize the Wichita region as an invaluable component of their pharmaceutical operations. Pfizer produces over 125 million units of medicine annually in the region, and Fagron has invested \$15 million in clean-air labs for the local production of injectable pharmaceuticals. Medical production facilities find the direct connection to advanced manufacturing technology education programs, such as those found at [WSU Tech](#), invaluable to their success.

# Greater Wichita Partnership

## PRINTED WEBSITE REPORT



## Insights

Find additional detail and information on these subjects:

- The [Kansas Health Science Center - College of Osteopathic Medicine](#) brought \$75 million of total investment to downtown Wichita transforming four buildings into a state-of-the-art medical campus.
- [Kansas Surgery and Recovery Center](#) recognized by Healthgrades one of the America's 100 Best Hospitals for Joint Replacement.
- Kansas Heart Hospital receives Medicare five-star ranking.
- [Fagron](#) expanded its Wichita, Kansas operations after releasing multiple new product lines, including RFID-enabled syringes, driving rapid growth and increased demand.
- Ascension Via Christi St. Teresa and Wesley Medical Center both earned five stars on [Forbes Top Hospitals 2026](#).

The Greater Wichita Partnership stands ready to assist you in identifying specific opportunities within the region. Contact us directly for strategic solutions, incentives, presentations, and reports designed to help you.



Executive Vice President of Economic Development  
**ANDREW NAVE**

(316) 500.6650

[andrew@greaterwichitapartnership.org](mailto:andrew@greaterwichitapartnership.org)



Contact our team to discover how your healthcare business can grow in the Greater Wichita region.

[Contact Andrew](#)